

FH 17-30



- 17 m (55 ft 9 in) max. lift height
- 3 000 kg (6 614 lb) max. capacity
- 13 m (42 ft 8 in) max. reach
- 4 wheel drive and steer
- Hydraulic stabilizers



ARTICULATED BOOMS



VERTICAL MASTS



TELESCOPIC BOOMS



SCISSOR LIFTS



TRAILERS



TELEHANDLERS



CRANES



MULTIJOB

FH FARESIN
HAULOTTE

Whenever and wherever you need it

Faresin-Haulotte advantages

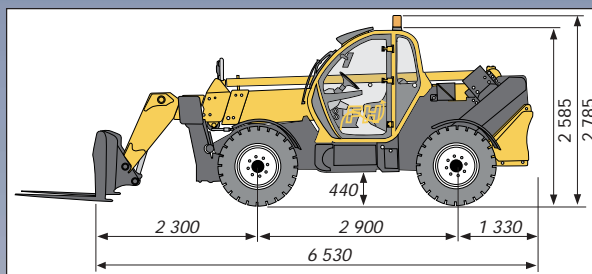
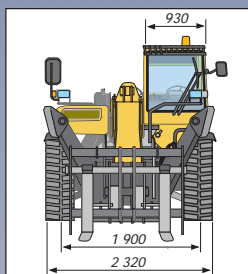
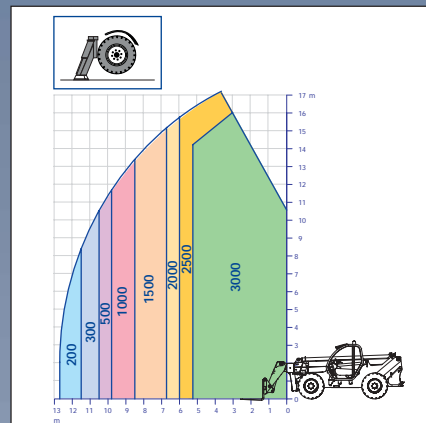
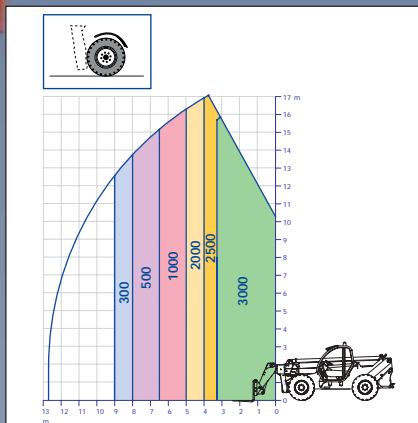
- Excellent driveability and high working autonomy.
- High comfort: spacious and soundproof cabin, on silentblocks, ergonomic adjustable driving seat with armrests and equipped with a driver safety system, heating system, air conditioning, rear window defroster, front and rear windshield wipers. Possibility to open rear and side windows.
- Max. 360° sight thanks to curved non-reflective windows, to the cabin made of glass and its raised position.
- "Inching" pedal allowing precise works.
- Easy controls thanks to one multifunctional joystick optimizing all the movements.
- Robust, reliable and easy to maintain.

STANDARD EQUIPMENT

- Turbo diesel – IVECO AIFO 8045 SE engine - 4 cylinders – 79.5 kW – (108 HP) (DIN 70020). Water cooling. Direct injection
- Automatic hydrostatic transmission with electric controlled reverse
- 4 wheel and drive steer with alignment control
- 24" industrial tyres
- Overload control with movements lock
- Fixed front axle: oscillating rear axle with epicyclic final reduction
- Anti-rolling device
- Automatic differential lock / front axle
- Hydraulic stabilizers
- Rotating beacon

OPTIONS & ACCESSOIRES

- Self-levelling system (+/-10%)
- Spare wheel
- Right wing warming mirror
- Accessories fast attachment
- Side shift
- Basket 2 persons (0.8 x 2.4 m / 2 ft 7 in x 7 ft 10 in) with hydraulic extension up to 4.2 m (13 ft 9 in)
- Bucket with teeth (500 l / 900 l) / (110 gal / 198 gal)
- Simple bucket (1000 l / 2000 l) / (220 gal / 440 gal)
- Mixing bucket (capacity 500 l) equipped with an exchange valve for mixing / unloading opening by electric contact
- Fork mounted hook with the same outreach as the machine
- Fork mounted winch with a 1.2 T or 2.5 T (2 645 lb or 5 511 lb) lift capacity
- Truss jib with or without winch
L = 2.5 m (8 ft 2 in) / lift capacity 1.2 T (2 645 lb) or
L = 4.5 m (14 ft 9 in) / lift capacity 0.6 T (1 323 lb)
- Air conditioning



SPECIFICATIONS

FH 17-30	
Lift capacity (500mm from forks heel)	3 000 kg / 6 614 lb
Lift height (with forks and one boom section)	17 m / 55 ft 9 in
Maximum outreach	13 m / 42 ft 8 in
Max. height with max. load	16 m / 52 ft 6 in
Max. outreach with max. load	3.5 m on tyres / 11 ft 6 in 5.5 m on stab / 18 ft
Max. load at max. height	2 500 kg / 5 512 lb
Max. load at max. outreach	200 kg (440 lb) on stab.
Forks (length x width x thickness)	1200 mm x 130 mm x 50 mm / 47 in x 5 in x 1.8 in
Max. gap between the forks	1310 mm / 52 in
Forks pitch rotation	150°
Tyres (front and rear)	20"
Engine	IVECO AIFO – 3900 cm ³ – 108 HP – 79.5 kW
Max. translation speed	30 km/h / 19 mph
Brakes system	Oil bath multidisc brakes for both front wheels
Transmission	Full hydrostatic with continuous speed control
Hydraulics	230 bars / 101 l/mn hydraulic variable pump
Cooling system	18 l / 4 gal
Engine oil	10.5 l / 2.3 gal
Hydraulic oil	100 l / 22 gal
Fuel	135 l / 29.7 gal
Unladen weight	11 900 kg / 26 234 lb
Overall width	2.32 m / 7 ft 7 in
Overall height	2.58 m / 8 ft 6 in
Overall length	6.53 m / 21 ft 5 in
Ground clearance	0.44 m / 17 in
Turning radius (outside wheels)	4 m / 13 ft 1 in



AS1418.10



Web : <http://www.haulotte.com>